

F

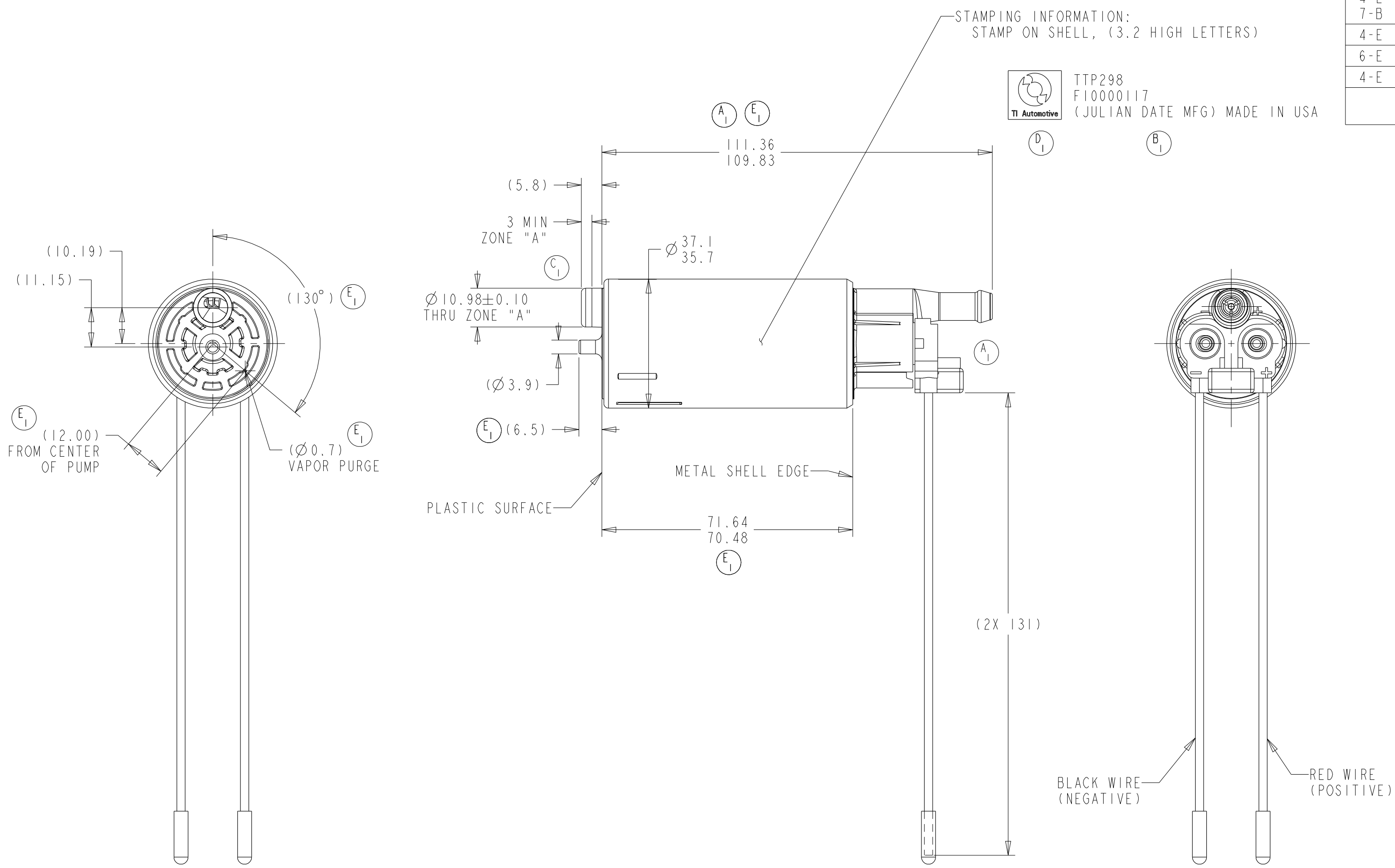
E

D

C

B

A



REVISIONS						
ZONE	LTR	DESCRIPTION	CHANGE No	DATE	BY	APPR'D
		RELEASE FOR QUOTE	01-371	30NOV01		MMcK
		RELEASE FOR PRODUCTION	67801	18DEC01	SLK	MMcK
5-E 4-E 7-B	A	A1 CHANGED OUTLET COVER AND ELECTRICAL CONNECTOR A2 UPDATED NOTES	68882	23AUG03	RMB	MMcK
4-E	B	B1 REMOVED PATENT NUMBERS	71528	08JUL08	DRG	WLL
6-E	C	C1 USILYS INLET PARTS WERE PMC	C'528	17MAY11	WDE	MMcK
4-E	D	D1 ADD TI AUTOMOTIVE LOGO	78165	10MAY16	JAK	MAS
	E	E1 RE-RELEASED AS A TI.9, WAS TI.78	80996	28FEB19	SLK	DJC

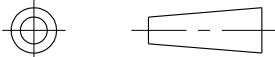
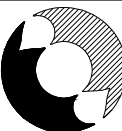
NOTES:

A₂

- PUMP WILL BE PACKAGED WITH THE FOLLOWING COMPONENTS TO PREVENT CONTAMINATION BY FOREIGN MATERIAL
 - INLET PLUG PROTECTOR
 - OUTLET PLUG PROTECTOR
 - POLYBAG

- MODEL TI.9

KEY PRODUCT CHARACTERISTICS				
REFER TO TI AUTOMOTIVE GLOBAL ADVANCED QUALITY PLANNING DOCUMENT CP-4-ALL-411 FOR THE CLASSIFICATION AND CONTROL OF KEY PRODUCT CHARACTERISTICS				
TYPE OF CHARACTERISTIC	SAFETY	REGULATORY	FUNCTION	FUNCTION PROCESS
	SC	SC ^R	SC	SC RD
NUMBER PER EACH CHARACTERISTIC	--	--	--	--
TOTAL NUMBER OF CHARACTERISTICS	--	--	--	--
- TI AUTOMOTIVE CONFIDENTIAL AND PROPRIETARY - THIS DRAWING IS PROPERTY OF TI AUTOMOTIVE. TI AUTOMOTIVE CLAIMS PROPRIETARY RIGHTS IN THE SUBJECT MATTER SHOWN AND DESCRIBED ON THIS DRAWING AND RETAINS ALL INTELLECTUAL PROPERTY RIGHTS. THE DRAWING IS PROVIDED FOR REFERENCE PURPOSES ONLY AND ON THE EXPRESS CONDITION THAT IT WILL BE HELD IN CONFIDENCE. THIS DRAWING SHALL NOT BE DISCLOSED TO OTHERS OR USED FOR THE PURPOSE OF MANUFACTURE BY OR PROCUREMENT FROM OTHERS OF THE ARTICLE OR PART SHOWN WITHOUT TI AUTOMOTIVE'S EXPRESS WRITTEN CONSENT. NO LICENSE OR OTHER RIGHT IS GIVEN OR IMPLIED BY THE PROVISION OF THIS DRAWING TO RECIPIENT. COPYRIGHT, TI AUTOMOTIVE 2018, ALL RIGHTS RESERVED.				

METRIC			
ALL DIMENSIONS ARE IN MILLIMETERS			
DO NOT SCALE			
DECIMAL TOLERANCES UNLESS OTHERWISE SPECIFIED ONE PLACE ±0.25 TWO PLACE ±0.13 ANGLES ±1°			
		THIRD ANGLE PROJECTION	
DIMENSIONS IN ACCORDANCE WITH ASME Y14.5 - 2009			
		630 COLUMBIA ST. CARO, MI 48723 +1 989.673.7727	
TI Automotive			
ENGINEER:	M.McKERVEY	18DEC2001	MATERIAL/SPECIFICATION:
DESIGNER:	S.KADY	18DEC2001	
CAD SYSTEM: PRO/E	SCALE: 1:1	SHEET NO. 1 OF 1	
REFERENCE ID/REV.: 000127368/AA		2D PLM REFERENCE/REV.: AR0056615/AA	
REFERENCE ID/REV.: 000127368/AA		3D PLM REFERENCE/REV.: AR0056535/AA	
DRAWING NAME: FUEL PUMP OUTLINE			
SIZE: A2	DRAWING NUMBER: F10000117		